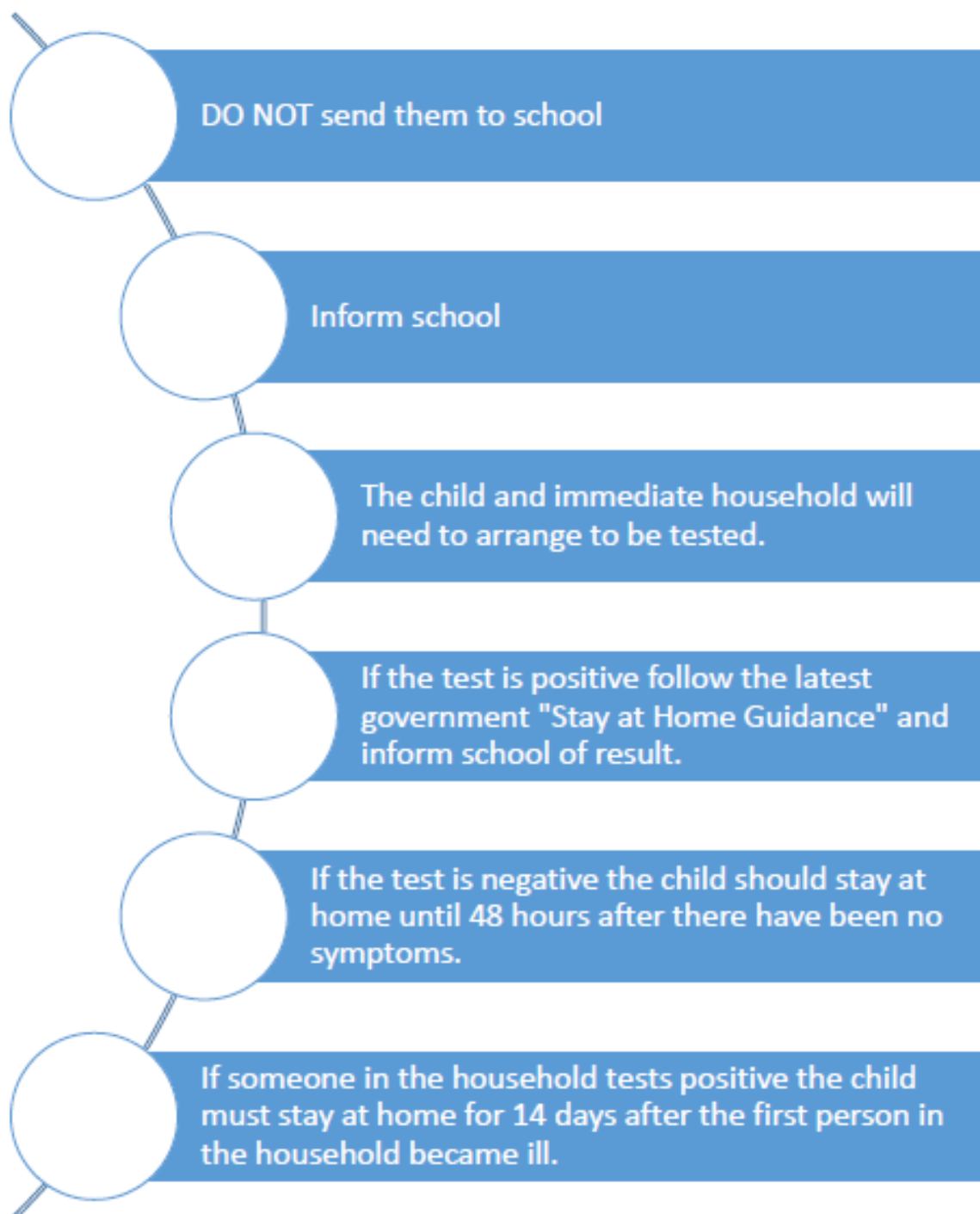
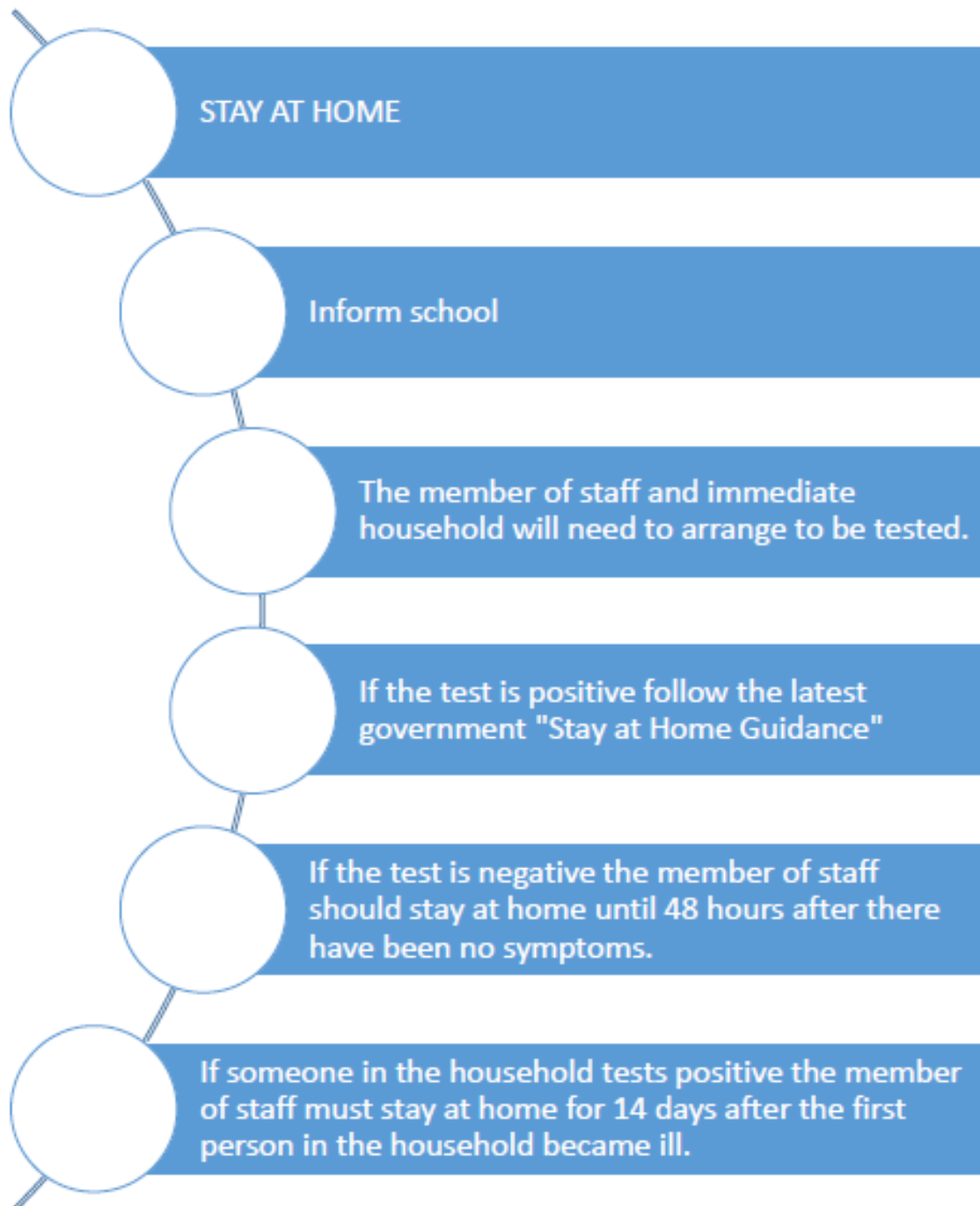


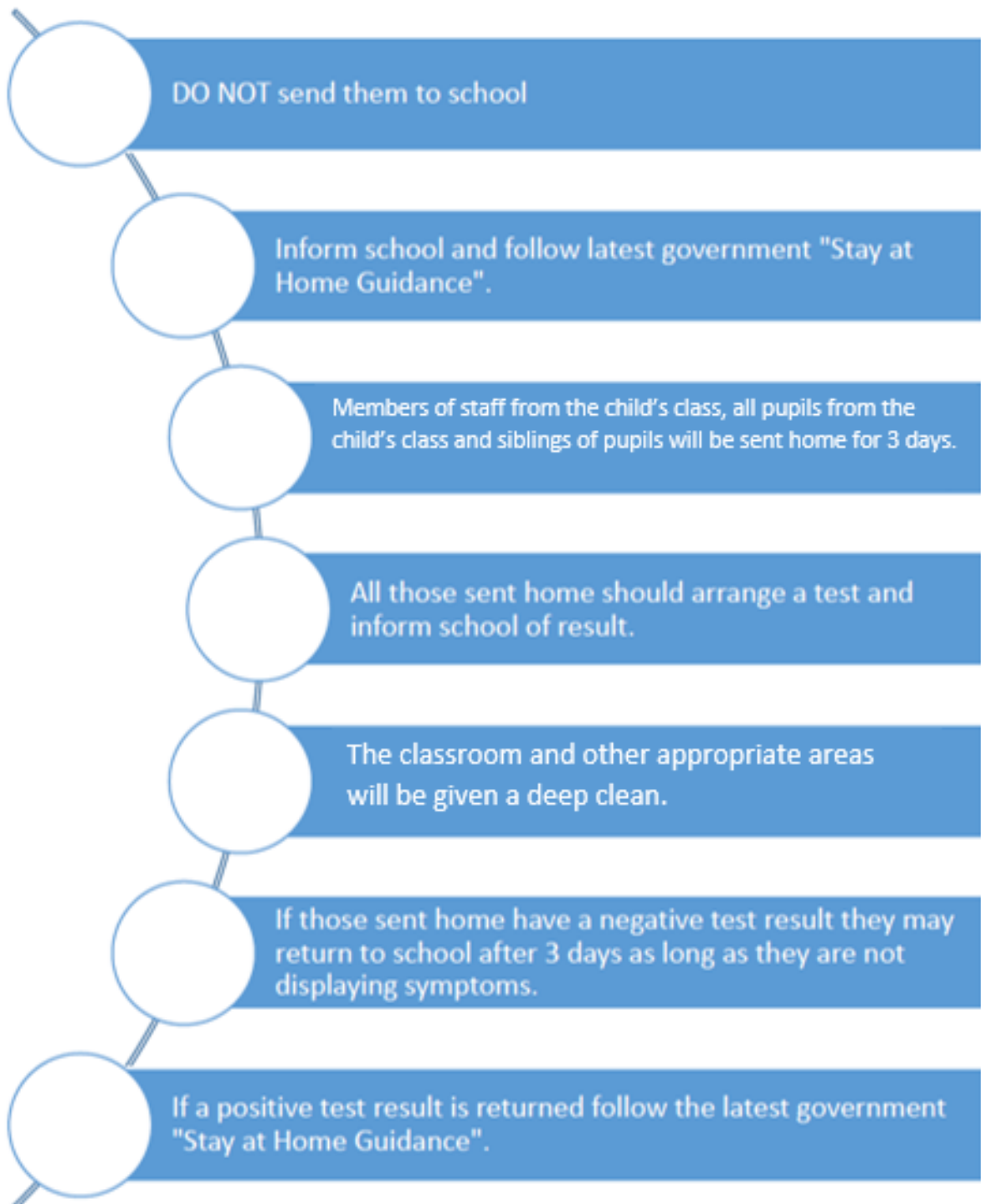
If a Child displays symptoms



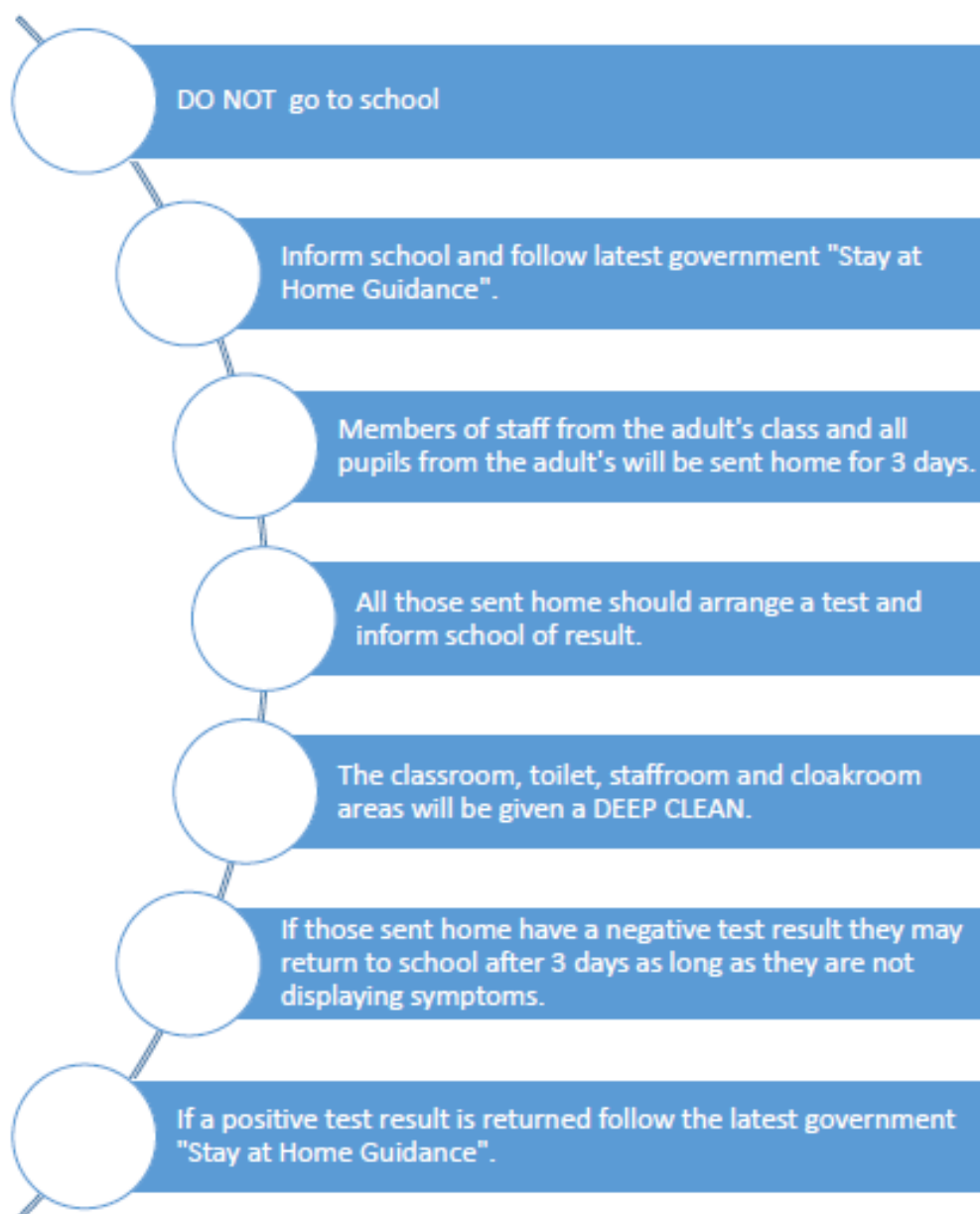
If a member of staff displays symptoms



If a Child tests positive for Coronavirus



If a Member of Staff tests positive for Coronavirus



If someone in a pupil or staff member's immediate Household displays symptoms



DO NOT come to school

Inform school and follow latest government "Stay at Home Guidance".

If all members of the household have negative results the pupil or staff member may return to school 48 hours after there are no symptoms.

If someone in a pupil or staff member's immediate household tests positive

